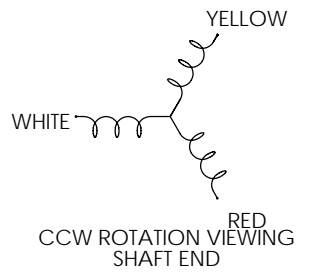
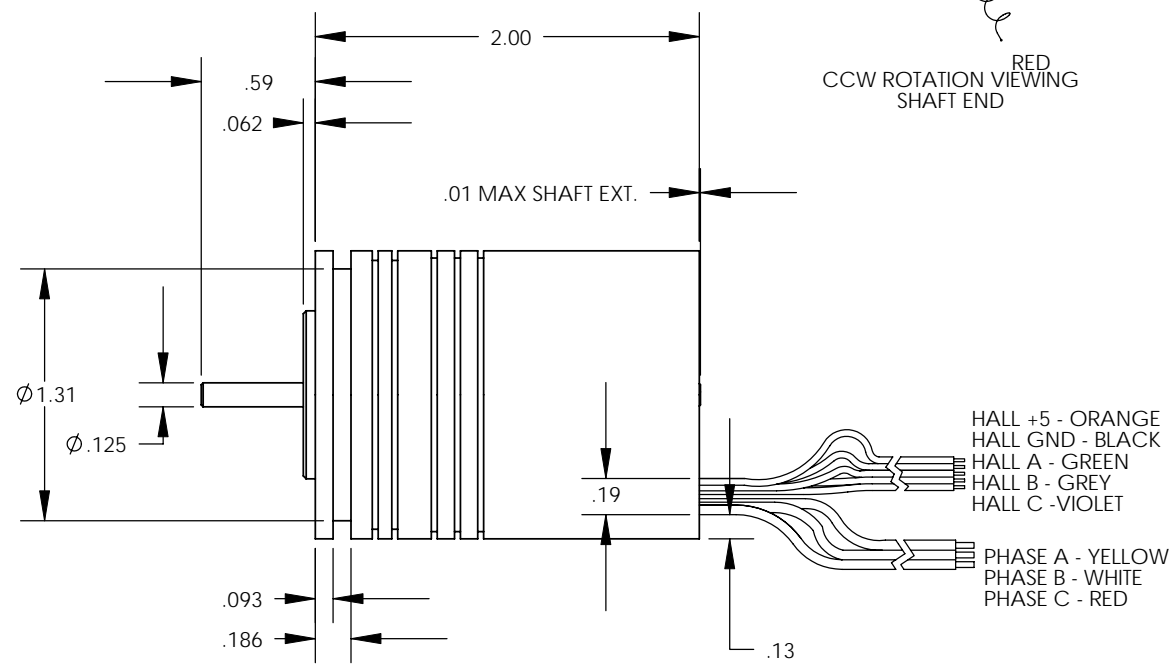
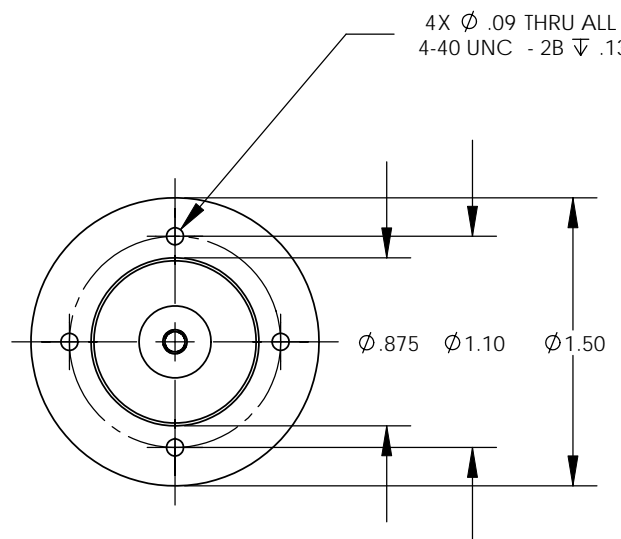
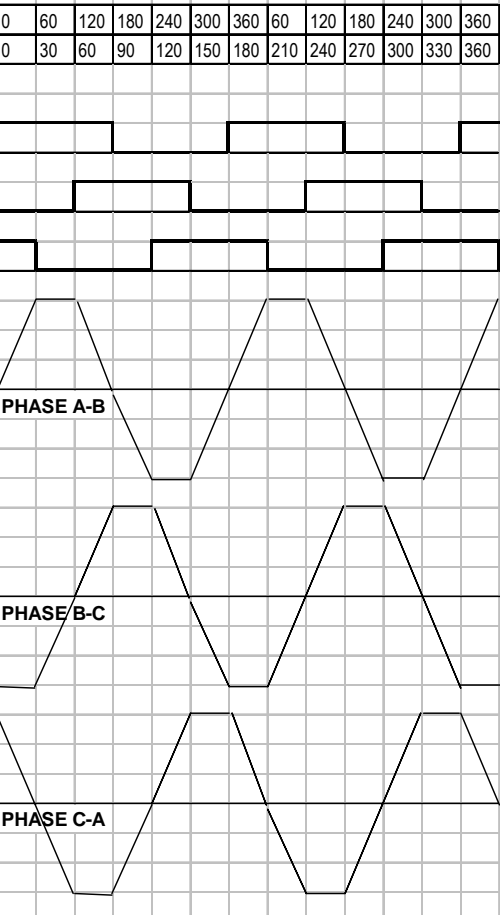


ELECTRICAL SPECIFICATIONS				
Symbol	Parameter	Units		
V _{DC}	Nominal Supply Voltage	V _{DC}	270	30
S _{nl}	No Load Speed	rpm	36,000	4,000
R	Resistance (Ph to Ph)	Ohm	11.70	11.70
I _{nl}	Max no load current	amps	0.10	0.10
T _f	Static Friction	oz-in	0.30	0.30
T _{pk}	Peak Torque	oz-in	239.62	26.62
T _{cs}	Max Cont Stall Torque	oz-in	11.38	11.38
T _{cs}	Max Cont Stall Torque w HS	oz-in	13.14	13.14
K _e	Voltage Constant	V/krpm	7.68	7.68
K _t	Torque Constant	oz-in/amp	10.38	10.38
1/K _e	Velocity Constant	krpm/V	130.21	130.21
K _m	Motor Constant	oz-in/√watt	3.04	3.04
I _{pk}	Peak Current @ Nominal V _{in}	amp	23.08	2.56
P _{disst}	Max Cont Pwr Dissipation	watt	20.83	20.83
P _{disst}	Max Cont Pwr Dissipation	watt	27.78	27.78
I _{cs}	Max Cont Current	amp	1.10	1.10
I _{cs}	Max Cont Current w HS	amp	1.27	1.27
L	Inductance (Ph to Ph)	mH	4.69	4.69
t _e	Elec Time Constant	msec	0.40	0.40

MECHANICAL SPECIFICATIONS				
J _m	Armature Inertia	oz-in-sec ²	4.136E-04	4.136E-04
t _m	Mech Time Constant	msec	6.3535	6.3535
R _{th}	Thermal Resistance	°C/watt	6	6
R _{th}	Thermal Resistance w HS	°C/watt	4.5	4.5
W	Motor Weight	oz	12.00	12.00
L	Motor Length	in	2.010	2.010
K _d	Damping Factor	oz-in/krpm	0.0068	0.0068
MaxW _t	Max Winding Temperature	°C	150	150

*Mounted to a 4" x 4" x 0.125" Aluminum Heat Sink

MOTOR	COLOR
PHASE A	YELLOW
PHASE B	WHITE
PHASE C	RED



- HALL +5 - ORANGE
- HALL GND - BLACK
- HALL A - GREEN
- HALL B - GREY
- HALL C - VIOLET
- PHASE A - YELLOW
- PHASE B - WHITE
- PHASE C - RED

PROPRIETARY AND CONFIDENTIAL THE INFORMATION CONTAINED IN THIS DRAWING IS THE SOLE PROPERTY OF SCOT ELECTRICAL PRODUCTS. ANY REPRODUCTION IN PART OR AS A WHOLE WITHOUT THE WRITTEN PERMISSION OF SCOT ELECTRICAL PRODUCTS IS PROHIBITED. DO NOT SCALE DRAWING	NAME	DATE	800-1 Frontenac Road Aurora, IL 60504-3146 United States (630)236-1020 FAX: (630)236-1030		
	DRAWN	SDK		05-02-02	
	CHECKED			DWG. NO. 15BDC5-A01-002	
	ENG APPR.				
MATERIAL	UNLESS OTHERWISE SPECIFIED:		SIZE	TITLE:	REV
FINISH	DIMENSIONS ARE IN INCHES TOLERANCES: FRACTIONAL ±1/32 ANGULAR MACH ±2 TWO PLACE DECIMAL ±.01 THREE PLACE DECIMAL ±.005		B	SIZE 15 DC MOTOR	
SCALE: 1:1			WEIGHT:	SHEET 1 OF 1	