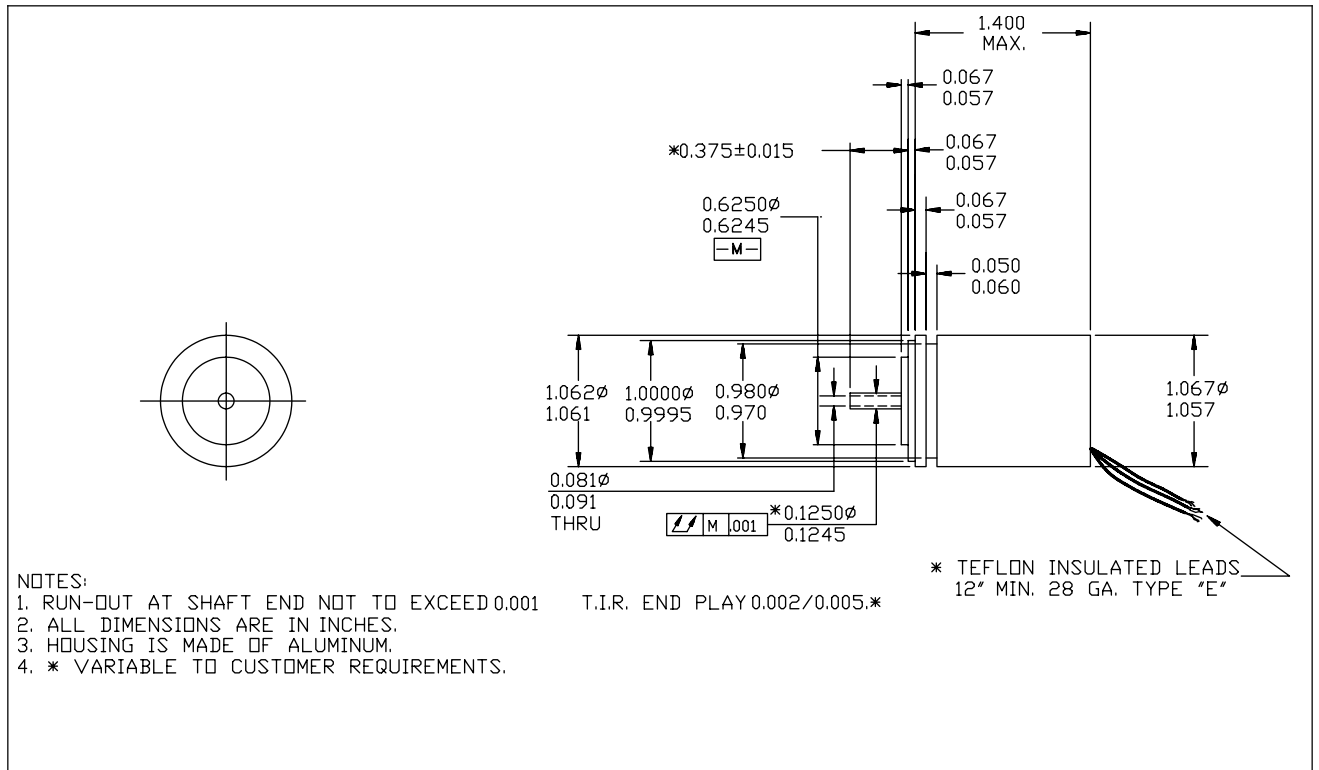


SIZE 11 DC INDICATOR



Description

DC indicator is a precision brushless position repeater based on the electrical inputs of the two phase windings. Typically, the two phase windings will be excited with a DC voltage at sine and cosine of the angle to be indicated. e.g.

- Black (S₃) to Red (S₁) V_{max} X Cos (pointer angle)
- Yellow (S₂) to Blue (S₄) V_{max} X Sin (pointer angle)

To establish pointer zero, a V_{max} of rated voltage (10 Vdc) is applied across Black (-) to Red (+) [V_{max} X Cos(0) = +10 Vdc]. If the applied Vdc Black to Red changed to 0 Vdc and Yellow (-) to Blue (+) to +1- Vdc, a pointer attached to the shaft will rotate 90° clockwise from the pointer zero viewing from the shaft end. Depending on the voltages applied to the windings, a pointer can be positioned precisely anywhere on a 360° dial.

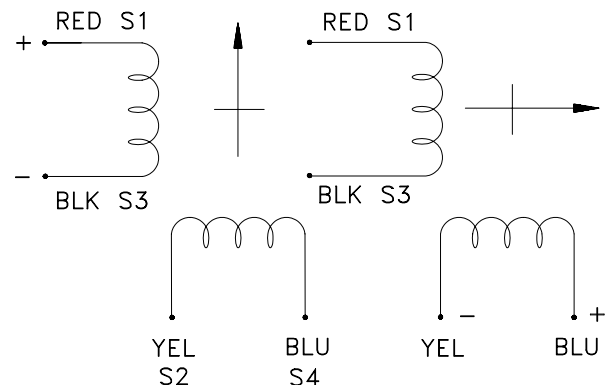
Options

We welcome requests for modifications to fit your exact needs.

Electrical Characteristics

Input Voltage	10	Vdc
Input Current/Phase	143	ma
Input Power/Phase	1.43	watts
Unit Torque Gradient	5,200	mg-mm/deg
Stator Resistance/Phase	70	ohms
Receiver Accuracy	60	minutes

POINTER ROTATION VIEWING SHAFT



P/N 11DCW5-AA01		Date: 10/31/2002	
SCOT ELECTRICAL PRODUCTS Division of Win Technologies Inc.	Title SIZE 11 DC INDICATOR	DWG #	REV
		SBN1028	B
		FSCM No. ONFF5	
800-1 Frontenac Rd. • Aurora, IL 60504 • Phone 630 236 1020 • Fax 630 236 1030 • www.Scot-Wintech.com		Sheet 1 of 1	